

Launton C of E School Newsletter



19th May 2022 | Issue 157



Key dates

[Term Dates 2021/2022](#)

[Term Dates 2022/2023](#)

Message from the PTA

The 2nd issue of the termly PTA Newsletter has been sent to parents, providing details of last term's events and activities and plans for fundraising for this term.

We have collected a range of good quality new and pre-loved school uniform and shoes that is available to buy at very reasonable prices.

<https://docs.google.com/forms/d/1TDRxFlAuTDNOIw4dK05ch8Ux3R4F7d11ZGfWJ0nA/view?usp=sharing>

Please click the link above to view what is available. Thank you to everyone who has supported this effort by donating and purchasing items.

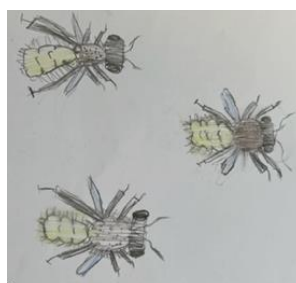
Save the Date!

- 10th June 2022** - Lolly Fridays!
- 16th June 2022** - Rags2Riches
- 12th July 2022** - AGM with election
- 15th July 2022** - Summer BBQ

Please join our Facebook and WhatsApp fundraising groups for more information:

<https://www.facebook.com/groups/802321022593827>

<https://chat.whatsapp.com/D4NRcYnL81b38U9NcantbZ>



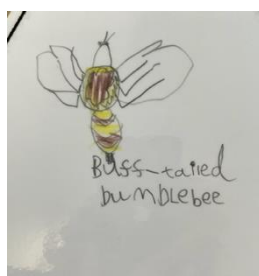
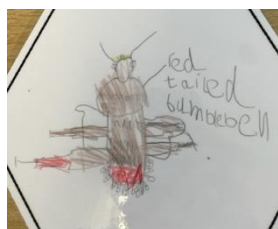
There has been lots of bee-related learning in school over recent days, with children talking about National Bee Day and completing the most beautiful observational drawing of bees. Who knew how many species of bee could be seen locally?



All the bees will be displayed at Island Pond Wood for the [Platinum Jubilee Celebration](#)



The children will be taking part in Jubilee-themed activities in school next week too.





In other news

This week is **national walk to school week**. Our school will be taking part and children will all have activity packs to complete to keep track of their activity levels. If they are able to walk to school for even part of the journey, then this can be recorded by them in their log. With the weather forecast to be fine, we are looking forward to a very active outdoor week.

Please remember, if you are in KS2 and you are going to bring a Garden in a Seedtray to display in school, this is the final weekend for building it.

Important information

Last day of Term 5 is **Wednesday 25th May** school resumes after half term on **Monday 6th June**. Please make sure you have ordered School Lunches for the first week back after half term by **Thursday 2nd June**.

Term 6 Clubs

After half term the following after school clubs will be running. All clubs will start the first week back and will run for 5 weeks.

Day	Club	Details
Monday	Choir	Year 2 to 6 Cost £20 for 5 weeks
Tuesday	Football Club	Years 3,4 & 5 Cost £20 for 5 weeks
Thursday	Art Club	Years 1 to 6 Cost £20 for 5 weeks
Friday	Netball/Basketball Club	Key Stage 2 (Years 3 to 6) Cost £20 for 5 weeks

All clubs need to be booked on Scopay, booking will close at midday Tuesday 24th May. Emails confirming your child's place will be sent Wednesday 25th May.



Updates & Reminders

[HV Health Development Review](#)

[ChatHealth](#) – a safe and secure text messaging service between healthcare professionals and service users that provides confidential help, advice and signposts support.

We are optimistically planning to invite parents and carers to our Sports Day this summer. More information will follow. Sports Day will be on Friday 24th June, which is the final day of National School Sports Week. Ash, Rowan and Willow classes will compete in the morning and Oak, Chestnut and Beech classes in the afternoon.

[Class photographs Wednesday 25th May](#)

Updated National Guidance

- Children and young people who are unwell and have a high temperature should stay at home and avoid contact with other people. They can go back to school, college or childcare when they no longer have a high temperature, and they are well enough to attend.
- Please follow this link to the latest information from the UK Health Security Agency regarding when to keep a child off school - [UKHSA Update](#)
- adults with a positive COVID-19 test result should try to stay at home and avoid contact with other people for 5 days, which is when they are most infectious. For children and young people aged 18 and under, the advice will be 3 days

Bridge Closure - From Monday 28th March until Friday 27th May the bridge into Launton Village will be closed to vehicles. It will remain open for pedestrians and cyclists. The diversion for vehicles is via the A41.

Remember: Please be aware that we have children in school with **serious food allergies**. To ensure the safety of all of our children please avoid sending your child to school with anything that contains nuts this includes sandwiches containing peanut butter or chocolate spread.